

Why Kallo?

- Care platforms manufactured to North American and other internationally accepted standards
- Programs, facilities and services set-up to proactively detect and treat infectious diseases
- On-going telehealth service support, leveraging both local and international expertise
- On-going education, training, & certification programs offered through Kallo University
- On-going service & maintenance programs for all facilities and equipment
- Leverages local skillsets and creates employment opportunities
- Has established partnerships with global financing institutions to bring projects to realization



kāllō

Intuitive technology. Enhancing life.™



255 Duncan Mill Rd. Suite 504
North York, ON. M3B 3H9, Canada

johnc@kalloinc.ca
+1 416 566 1080

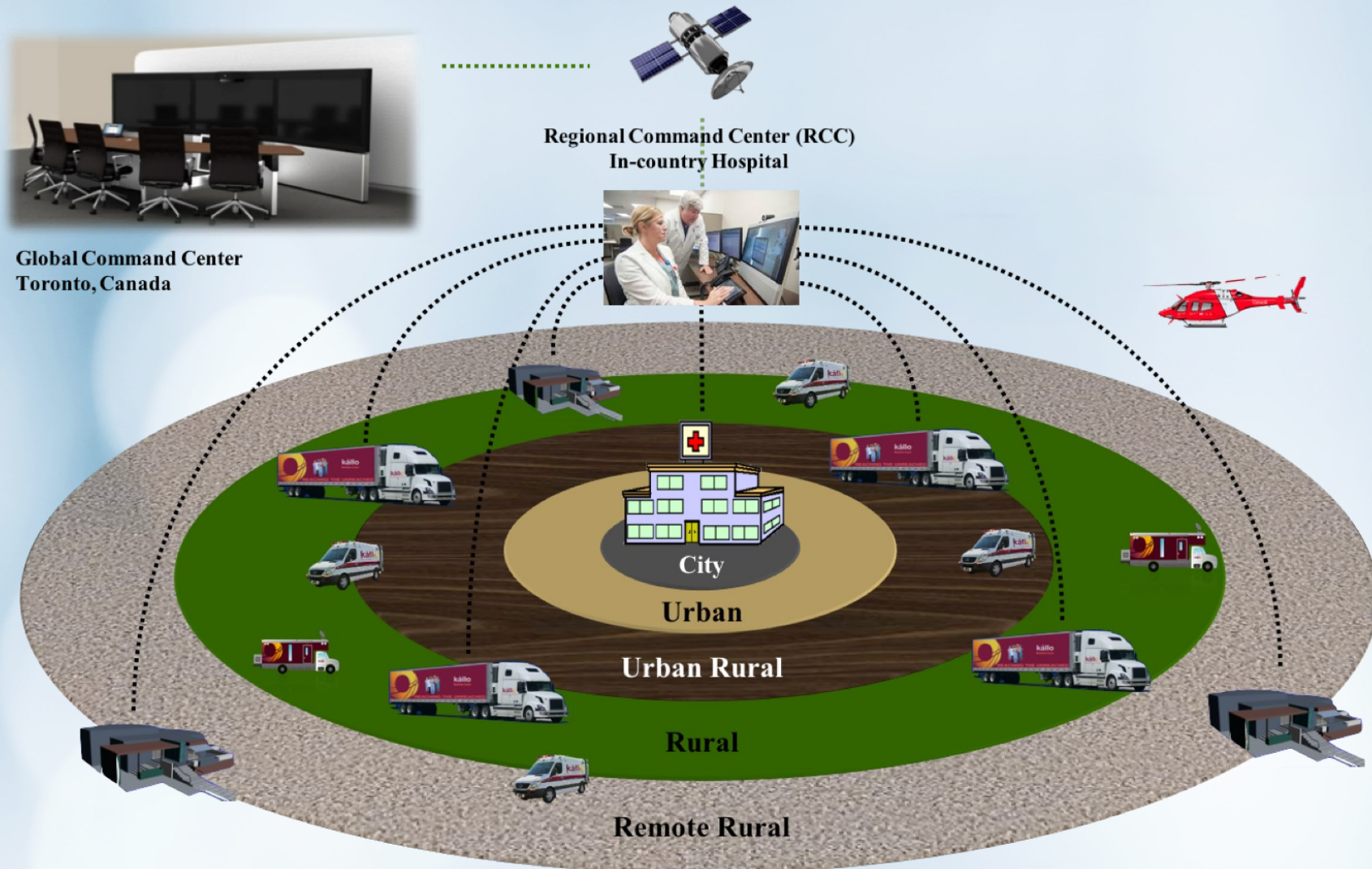
www.kalloinc.ca

FROST & SULLIVAN

**Healthcare Innovation Through
Integrated Healthcare Services**

Emerging Market Innovation Award Recipient





Telehealth

Källo's telehealth program is an award-winning technology connected to our global network of physicians, nurse practitioners, pharmacists, specialists and surgeons specialized in minimal invasive procedures on a federated model. The telehealth program facilitates synchronous and asynchronous interactions where patients and staff are in different locations.

Professional Services

Källo's maintenance services program has three components:

- 1) Biomedical Engineering services
- 2) Mechanical & Electrical Engineering services
- 3) Information and Communications Technology

Källo provides a complete and integrated solution ensuring reliability and clinical performance with proactive support, preventative and corrective maintenance, and service delivery for all medical devices.

Källo University

Education and training programs offered in partnership with a network of international universities and teaching hospitals.

Curricula:

- ⇒ Clinical Care Programs
- ⇒ Training using patient simulators compliant with AHA
- ⇒ Clinical Informatics (including telehealth)
- ⇒ Engineering – Biomedical; M&E; Facility
- ⇒ Health Administration; Quality and ICT



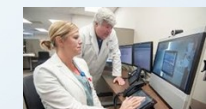
Global Response Center (GRC)

Global Clinical Command Center:

- 1) A federated telehealth services system with patient encounter management using A.I. in collaboration with IBM
- 2) Management of performance using patient outcome index

Global Administrative Command Center:

- 1) Engineering and ICT support services with management of supply chain
- 2) Management of resources, operations and govern-



Regional Response Center (RRC)

Regional Clinical Command Center:

Level one services provided regionally with advanced tertiary care support from the Global Clinical Command Center

Regional Administrative Command Center:

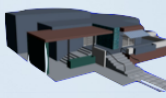
Level one operations and management support with advanced management and operations support from the Global Administrative Command Center.



Regional & District Hospitals

Fixed Care Platforms

- 1) Manufactured and pre-assembled to North American Standards
- 2) All medical devices and systems installed and tested for quality assurance
- 3) On-site assembly allows for rapid implementation
- 4) Källo's integrated system qualifies for standards certifications including JCI (Joint Commission International) and Canadian Healthcare Standards.



Rural Polyclinics



Mobile Clinics

Mobile Care Platforms

- 1) Embedded technologies running all processes enables transparency and accountability at all levels of operations
- 2) Medical equipment ruggedized for travel on rough terrain.
- 3) Extensive diagnostic and treatment facilities to North American standards



Surface Ambulance

EMS and Patient Transportation

An integrated EMS system for real-time exchange of patient information to manage transportation and emergency care before and after arrival at point-of-care.



Air Ambulance



Utility Vehicle

Support Vehicles

Fleet of vehicles for transportation of staff, equipment, and supplies for replenishment of stock with built-in ICT for effective operational management



Cargo Vehicle

Logistics & Supply Chain

A network of warehouses and inventory movement using technology for just-in-time deliveries with drone technology available for deliveries of emergency life-saving medications and consumables.

